

500,000 Counts High Performance! Innovative Features! User-Oriented!

5-4/5d DCV At 1 μ V Best Resolution, DC & AC in Dual Display, 100kHz DC+AC TRMS, Cat IV 1kV Safety...
USB PC-Comm, Paper-White Backlit, Bar-graph, BeepJack™, Crest (Peak), Rec (Min Max Avg), Relative...
Measures VFD V & Hz, X-Speed Large Cx, nS Conductance, 4-20mA, T1-T2, Line Level Hz, Duty %, dBm...
Ergonomic, Large LCD, Battery Access Cover, Magnetic Hanger, Holster, Probe Holders, Tilt stand Hanger...



**BM860 Series
Professional Multimeter**



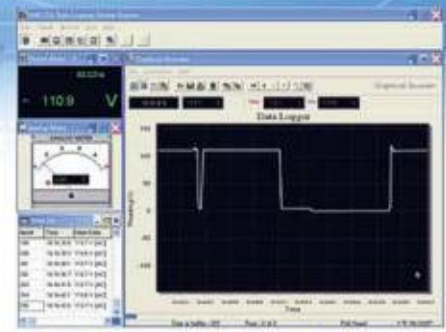
BRIGHT PEOPLE'S CHOICE
<http://www.brymen.com>



● **BM869**



● **BM867**



**BU-86X interface kit
(optional purchase)**



869	867	FUNCTIONS & FEATURES
●	●	5-4/5 Digits 500,000 Counts Large Easy To Read LCD Display
●	●	Fast Measurements, 5/Sec; Fully Auto-Ranging
●	●	Dual Digital Display
●	●	41 Segment Analog Bar-graph Updates 60/Sec
●	●	Optional Purchase USB Cable & Software For Win98/2k/xp/Vista
●	●	Intelligent Auto Power Off (I-APO) Resets On Significant Operation & Readings
●	●	Data Hold
●	●	Relative Zero Mode
●	●	Audible & Visible BeepJack™ Input Warning Against Improper Plug In
●	●	AC, AC+DC True RMS Conversion;
●	●	100kHz AC, AC+DC Voltage Bandwidth
●	0.03%	0.02% High Basic DCV Accuracy
●	●	VFD-V & VFD-Hz Measures Fundamental V & Hz Of Most Variable Frequency Drives
●	●	T1-T2 Dual Type-K Temperature -50°C To 1000°C; Selectable °F Readings
●	●	Record Max/Min Readings; Calculates Average Reading over time; Auto-Ranging
●	●	Crest (Instantaneous Peak Hold) Max/Min Readings, Auto-Ranging
●	●	Paper-White Back-Lighted Large Easy To Read LCD Display
●	●	dBm Readings, 20 Selectable Impedance Values
●	●	DCV 0.001mV To 1000V
●	●	ACV 0.01mV To 1000V
●	●	AC+DCV 0.01mV To 1000V
●	15A	DCA 0.01μA To 10A; 20A For 30 Seconds Per 5 Minutes Cooling
●	15A	ACA 0.01μA To 10A; 20A For 30 Seconds Per 5 Minutes Cooling
●	15A	AC+DCA 0.01μA To 10A; 20A For 30 Seconds Per 5 Minutes Cooling
●	●	Ohms 0.01Ω To 50MΩ
●	●	Conductance 0.01nS To 99.99nS
●	●	X-Speed Capacitance 50.00nF To 25mF
●	●	Line Level Frequency 10Hz To 200kHz
●	●	Logic Level Frequency 5Hz To 1MHz
●	●	Logic Level Duty Cycle Readings 0.1% To 99.99%
●	●	Diode Tester
●	●	Rugged Fire Retarded Casing With Battery Access Door
●	●	Replaceable Protective Holster With Probe-Holders & Tilt-Stand
●	●	Optional Purchase Magnetic Hanger
●	600V	1000V General (Ohm, Capacitance ... etc.) Input Protection
●	600V	1000V High Breaking Capacity Fuses Protected On Current Inputs
●	●	Transient Protection Up To 12kV 1.2/50μs Lightning Surge
●	●	LVD Meets EN61010-1 CAT IV 1kV
●	●	EMC EN61326-1:2006 (EN55022, EN61000-3-2/-3 & EN61000-4-2/-3/-4/-5/-6/-8/-11)

The Ultimate Choice Of Resolution, Performance, Safety & Features!

Unbeatable 5-4/5d DCV Resolution, 100kHz DC+AC Performance, Cat IV 1kV Safety & New VFD Features!



HIGH ACCURACY
0.02% BASIC DCV ACCURACY;
1 μ VDC BEST RESOLUTION

AUTO & MANUAL-RANGING
AUTO-RANGING WITH
MANUAL-RANGING OVERRIDE

PAPER-WHITE DISPLAY BACKLIGHT
FOR EASY VIEWING IN THE DARK

FUNCTION SELECTION
TOGGLE CONVENIENTLY BETWEEN
PRIMARY & SECONDARY FUNCTIONS

CREST (PEAK HOLD)
CAPTURES INSTANTANEOUS
+PEAK & -PEAK, AUTO-RANGING

LOGIC LEVEL DUTY%
MEASURES DIGITAL LOGIC LEVEL
DUTY CYCLE % READINGS

LOGIC LEVEL Hz
MEASURES DIGITAL LOGIC LEVEL
FREQUENCIES UP TO 1MHz

HIGH IMPEDANCE VOLTAGE
1000VAC/DC MEASURING CAPABILITIES;
HIGH INPUT IMPEDANCE FOR
LOAD SENSITIVE CIRCUITS

Hz OF LINE LEVEL VOLTAGE
MEASURES NOISY HIGH VOLTAGE
ACV FREQUENCIES UP TO 200kHz
IN DUAL DISPLAY

dBm FUNCTION
WITH 20 SELECTABLE
REFERENCE IMPEDANCE VALUES

VFD V & Hz FEATURE
MEASURES FUNDAMENTAL
VOLTAGE & FREQUENCY OF MOST
VARIABLE FREQUENCY DRIVES

PC INTERFACE CAPABILITY
OPTIONAL PURCHASE USB CABLE
WITH DATA RECORDING PC SOFTWARE
FOR WIN98/NT4/2K/XP/VISTA

BEEP-JACK™ AUDIBLE & VISIBLE WARNING
GUARDS AGAINST IMPROPER A-TERMINAL
PLUG IN. DECREASES RISKS OF DAMAGE

INTELLIGENT AUTO-POWER-OFF
TO EXTEND BATTERY LIFE. HPO RESETS ON
SIGNIFICANT OPERATION & MEASUREMENTS

AC, AC+DC 100kHz TRUE RMS
FOR NON-SINUSOIDAL WAVEFORMS
OF COMPLEX VOLTAGE OR CURRENT SIGNALS

PROTECTIVE HOLSTER
WITH HOLDERS FOR PROBE STORAGE
AND "THIRD HAND" FEATURE,
REPLACEABLE & WASHABLE

LVD SAFETY
MEETS EN61010-1
2ND EDITION CAT IV 1kV

ANALOG BAR-GRAPH
FAST UPDATE RATE 60/SEC

LARGE 500,000 COUNTS LCD DISPLAY
5/SEC FAST NOMINAL UPDATE RATE

ASIC TECHNOLOGY
MORE FUNCTIONS & FEATURES
AT AFFORDABLE PRICES

DUAL DIGITAL DISPLAY
SIMULTANEOUSLY VIEW RELEVANT
PARAMETERS IN COMPLEMENTARY DISPLAY

T1-T2 TYPE-K TEMPERATURE
2 CHANNEL MEASUREMENTS,
SELECTABLE °C & °F READINGS

DIODE TEST
FOR CHECKING DIODES
AND RECTIFIERS

DATA HOLD
FREEZES THE DISPLAYING
READING FOR LATER VIEW

MAX MIN AVG RECORD
RECORD MAX, MIN & AVG
READINGS; AUTO-RANGING

nS CONDUCTANCE
nS=1/G Ω VIRTUALLY EXTENDS
RESISTANCE MEASUREMENT TO
THE ORDER OF G Ω . IT IS USEFUL
FOR LEAKAGE MEASUREMENTS

FAST AUDIBLE CONTINUITY
FOR QUICK OPEN-SHORT TESTS
ON SWITCHES, FUSES, AND WIRES

%4-20mA LOOP CURRENT
FOR PROCESS CONTROL

X-SPEED CAPACITANCE
X-SPEED MEASURES UP TO 25mF
ONLY IN A FEW SECONDS; 1kV PROTECTION

CURRENT & Hz
MEASURES CURRENT & FREQUENCIES,
AC & DC IN DUAL DISPLAY

ERGONOMIC STREAMLINE DESIGN
FITS COMFORTABLY IN ONE'S HAND

TRANSIENT PROTECTION
UP TO 12kV 1.2/50 μ s LIGHTNING SURGE;
SUPERB PROTECTION FOR SERIOUS USERS

EMC
MEETS EN61326-1:2006 (EN55022,
EN61000-3-2/-3 & EN61000-4-2/-3/-4/-5/-6/-8/-11)

BM869 & BM867 GENERAL SPECIFICATION

Display: 4-4/5 digits 50,000 counts fast mode. Selectable stable mode
5-4/5 digits 500,000 counts for DC Voltage, & 5 digits 99,999 counts for Hz
Polarity: Automatic
Update Rate:
4-4/5 digits fast mode: 5 per second nominal;
5-4/5 digits stable mode: 1.25 per second nominal;
41 Segments Bar graph: 60 per second max
Operating Temperature: 0°C to 45°C
Relative Humidity: Maximum relative humidity 80% for temperature up to 31°C decreasing linearly to 50% relative humidity at 45°C
Pollution degree: 2
Storage Temperature: -20°C to 60°C, < 80% R.H. (with battery removed)
Altitude: Operating below 2000m
Temperature Coefficient: nominal 0.15 x (specified accuracy) / °C @|0°C - 18°C or 28°C - 45°C, or otherwise specified
Sensing: AC, AC+DC True RMS
Safety: Double insulation per IEC61010-1 2nd Ed., EN61010-1 2nd Ed., UL61010-1 2nd Ed. & CAN/CSA C22.2 No. 61010.1-0.92 to Category IV 1000V AC & DC
BM867 Terminals (to COM) Measurement Category:
V : Category IV 1000 Vac & Vdc

A / mA μ A : Category IV 600 Vac and 300 Vdc
BM869 Terminals (to COM) Measurement Category:
V / A / mA μ A : Category IV 1000 Vac & Vdc
Overload Protections:
BM867:
 μ A & mA: 1A/600V, IR 10kA or better, F fuse
A: 10A/600V, IR 100kA or better, F fuse
V: 1050Vrms, 1450Vpeak
mV, Ω & Others: 600 Vdc & Vac rms
BM869
 μ A & mA: 0.44A/1000V, IR 10kA or better, F fuse
A: 11A/1000V, IR 20kA or better, F fuse
V, mV, Ω & Others: 1050Vrms, 1450Vpeak
Transient protection: 12kV (1.2/50 μ s surge)
E.M.C.: Meets EN61326-1:2006 (EN55022, EN61000-3-2, EN61000-3-3, EN61000-4-2, EN61000-4-3, EN61000-4-4, EN61000-4-5, EN61000-4-6, EN61000-4-8, EN61000-4-11)
In an RF field of 3V/m:
Capacitance function is not specified
Other function ranges:
Total Accuracy = Specified Accuracy + 100 digits

Performance above 3V/m is not specified
Power Supply: Single Alkaline 9V battery; NEDA1604A, JIS6AM6 or IEC6LF22
Power Consumption: 6.5mA typical; 8mA for VFD ranges (BM869 only)
Low Battery: Below approx. 7V
APO Timing: Idle for 17 minutes
APO Consumption: 70 μ A typical
Dimension: L208mm X W103mm X H64.5mm with holster
Weight: 635 gm with holster
Accessories: Test leads (pair), holster, battery installed, user's manual, Bkp60 banana plug K-type thermocouple x 1 (BM869 only)
Optional Accessories: BU-86X PC interface kit, Bkb32 banana pins to K-type socket plug adapter (BM869 only)
Special Features: Record MAX, MIN & AVG readings; Crest (Instantaneous Peak hold) MAX & MIN readings; Relative zero mode; 500,000 counts stable DCV mode; Paper-White Backlit display; dBm readings; %4-20mA loop current readings; Data Hold; BeepJack™ Audible & visible input warning; T1-T2 differential temperature readings (BM869 only); VFD V & Hz readings (BM869 only)

ELECTRICAL SPECIFICATIONS

Accuracy is \pm (% reading digits + number of digits) or otherwise specified, at 23°C \pm 5°C & less than 75% relative humidity.
True RMS voltage & current accuracies are specified from 5% to 100% of range or otherwise specified. Maximum Crest Factor < 3:1 at full scale & < 6:1 at half scale, and with frequency components within the specified frequency bandwidth for non-sinusoidal waveforms.

DC Voltage

RANGE	BM869	BM867
Accuracy		
500.00 mV, 5.0000V	0.02% + 2d	0.03% + 2d
50.000V	0.03% + 2d	0.04% + 2d
500.00V	0.04% + 2d	0.05% + 2d
1000.0V	0.15% + 2d	0.15% + 2d

NMR: >60dB @ 50/60Hz
CMRR: >120dB @ DC, 50/60Hz, Rs=1k Ω
Input Impedance: 10M Ω , 60pF nominal (80pF nominal for 500mV range)

AC, DC AC & AC+DC AC Voltage

RANGE	BM869	BM867	
Accuracy *			
20Hz ~ 45Hz			
500.00mV, 5.0000V, 50.000V	1.5% + 40d	Unspec'd	
500.00V, 1000.0V	Unspec'd	Unspec'd	
DC, 45Hz ~ 300Hz			
500.00mV	0.35% + 20d	0.8%+60d	
5.0000V, 50.000V	0.8% + 30d		
500.00V, 1000.0V	0.5% + 40d		
300Hz ~ 5kHz		300Hz ~ 1kHz	
500.00mV	0.35% + 20d	0.8%+40d	
5.0000V, 50.000V, 500.00V	0.5% + 40d	2.0%+60d	
1000.0V	0.8% + 40d (300Hz ~ 1kHz)	1.0%+40d	
5kHz ~ 20kHz		1kHz ~ 20kHz	
500.00mV	0.5%+30d	1dB**	
5.0000V, 50.000V	0.8%+40d	2dB**	
500.00V	0.5%+40d	3dB**	
1000.0V	Unspec'd	Unspec'd	
20kHz ~ 100kHz			
500.00mV	2.5%+40d	Unspec'd	
5.0000V, 50.000V	4.0%+40d**		
500.00V	Unspec'd		
1000.0V	Unspec'd	Unspec'd	

*From 5% to 10% of range: Specified accuracy + 80d
**From 5% to 10% of range: Specified accuracy + 180d
From 10% to 15% of range: Specified accuracy + 100d
CMRR: >75dB @ DC to 60Hz, Rs=1k Ω
Input Impedance: 10M Ω , 60pF nominal (80pF nominal for 500mV range)
Residual reading less than 50 digits with test leads shorted.

VFD AC Voltage (BM869 only)

RANGE	Accuracy*
5Hz ~ 20Hz	
5.0000V, 50.000V, 500.00V, 1000.0V	3% + 80d
20Hz ~ 200Hz	
5.0000V, 50.000V, 500.00V, 1000.0V	2% + 50d
200Hz ~ 440Hz	
5.0000V, 50.000V, 500.00V, 1000.0V	6% + 80d**

*Not specified for fundamental frequency > 440Hz
**Accuracy linearly decreases from 2% + 50d @ 200Hz to 6% + 80d @ 440Hz

dBm

Range and accuracy are subjected to ACmV, ACV, and reference impedance selected. Typical 600 Ω reference impedance ranges:
At ACmV: -29.83dBm to 03.80dBm
At ACV: -01.09dBm to 62.22dBm
Input Impedance: 10M Ω , 60pF nominal
Selectable reference impedance of 4, 8, 16, 32, 50, 75, 93, 110, 125, 135, 150, 200, 250, 300, 500, 600, 800, 900, 1000 & 1200 Ω

Ohms

RANGE	BM869	BM867
Accuracy		
500.00 Ω	0.07%+10d	0.1%+10d
5.0000k Ω	0.07%+2d	0.1%+6d
50.000k Ω	0.1%+2d	0.1%+6d
500.00k Ω	0.1%+2d	0.1%+6d
5.0000M Ω	0.3%+6d	0.4%+6d
50.000M Ω	2.0%+6d	2.0%+6d
99.99nS*	2.0%+10d	2.0%+10d

Open Circuit Voltage: < 1.3VDC (< 3VDC for 500 Ω range)
*From 0% to 10% of range: Specified accuracy + 30d

Audible Continuity Tester

Audible threshold: between 20 Ω and 200 Ω
Response time < 100 μ s

Diode Tester

Range	Accuracy	Test Current (Typical)	Open Circuit Voltage
2.0000V	1%+1d	0.4mA	< 3.5 VDC

Capacitance

RANGE	Accuracy*
50.00nF	0.8% + 3d
500.0nF	0.8% + 3d
5.000 μ F	1.5% + 3d
50.00 μ F	2.5% + 3d
500.0 μ F**	3.5% + 5d
5.000mF**	5.0% + 5d
25.00mF**	6.5% + 5d

*Accuracies with film capacitor or better
**In manual-ranging mode, measurements not specified below 45.0 μ F/0.450mF/4.50mF (450 counts) for 500.0 μ F/5.000mF/25.00mF ranges respectively

DC Loop Current %4-20mA

4mA = 0% (zero); 20mA = 100% (span)
Resolution: 0.01% Accuracy: \pm 25d

Crest mode (Instantaneous Peak Hold)

Accuracy: Specified accuracy \pm 100 digits for changes > 0.8ms in duration

DC Current

RANGE	Accuracy	Burden Voltage
500.00 μ A	0.15%+20d	0.15mV/ μ A
5000.0 μ A	0.1%+20d	0.15mV/ μ A
50.000mA	0.15%+20d	3.3mV/mA
500.00mA	0.15%+30d	3.3mV/mA
5.0000A	0.5%+20d	45mV/A
10.000A*	0.5%+20d	45mV/A

*10A continuous, >10A to 20A (to 15A for BM867) for 30 second max with 5 minutes cool down interval

T1-T2 Dual Type-K Temperature (BM869 only)

RANGE	Accuracy
-50.0°C to 1000.0°C	0.3%+1.5°C
-58.0°F to 1832.0°F	0.3%+3.0°F

Type-K thermocouple range & accuracy not included

AC, DC AC & AC+DC AC Current

RANGE	BM869	BM867	Burden Voltage
Accuracy			
DC, 50Hz ~ 60Hz			
500.00 μ A	0.5%+50d	1.0%+40d	0.15mV/ μ A
5000.0 μ A			0.15mV/ μ A
50.000mA			3.3mV/mA
500.00mA			3.3mV/mA
5.0000A			45mV/A
10.000A*			45mV/A
40Hz ~ 1kHz			
500.00 μ A	0.7%+50d	1.0%+40d	0.15mV/ μ A
5000.0 μ A			0.15mV/ μ A
50.000mA			3.3mV/mA
500.00mA			3.3mV/mA
5.0000A			45mV/A
10.000A*			45mV/A
1kHz ~ 10kHz			
500.00 μ A	2.0%+50d	Unspec'd	0.15mV/ μ A
5000.0 μ A			0.15mV/ μ A
50.000mA			3.3mV/mA
500.00mA			3.3mV/mA
5.0000A			45mV/A
10.000A*	Unspec'd	Unspec'd	45mV/A

*10A continuous, >10A to 20A (to 15A for BM867) for 30 second max with 5 minutes cool down interval

Hz Line Level Frequency

AC Function RANGE	Sensitivity (Sine RMS)	Range
500mV	100mV	10Hz ~ 200kHz
5V	0.5V	10Hz ~ 200kHz
50V	5V	10Hz ~ 100kHz
500V	50V	10Hz ~ 100kHz
1000V	500V	10Hz ~ 10kHz
VFD 5V	0.5V ~ 2V*	10Hz ~ 440Hz
VFD 50V	5V ~ 20V*	10Hz ~ 440Hz
VFD 500V	50V ~ 200V*	10Hz ~ 440Hz
500 μ A	50 μ A	10Hz ~ 10kHz
5000 μ A	500 μ A	10Hz ~ 10kHz
50mA	5mA	10Hz ~ 10kHz
500mA	50mA	10Hz ~ 10kHz
5A	1A	10Hz ~ 3kHz
10A	10A	10Hz ~ 3kHz

Accuracy: 0.02%+4d

*VFD sensitivity linearly decreases from 200Hz to 440Hz

Hz Logic Level Frequency

RANGE	Accuracy
5.000Hz ~ 1.0000MHz	0.002%+4d

Sensitivity: 2.5Vp square wave

%Duty Cycle

RANGE	Accuracy
0.1% ~ 99.99%	3d/kHz+2d

Input Frequency: 5Hz ~ 500 kHz, 5V Logic Family

BRYMEN TECHNOLOGY CORPORATION

http://www.brymen.com
TEL: +886 2 2226 3396 (rep)
FAX: +886 2 2225 0025



Copyright © MMIX B.T.C. All rights reserved
Specifications subject to change without notice
Patented & Patents Pending. Printed in Taiwan